

JSW ELECTRIC SERVO DRIVE INJECTION MOLDING MACHINE:

TEKMART

Model: J450ADS-1400H

SN: MM191403

Mfg Date: March 2020

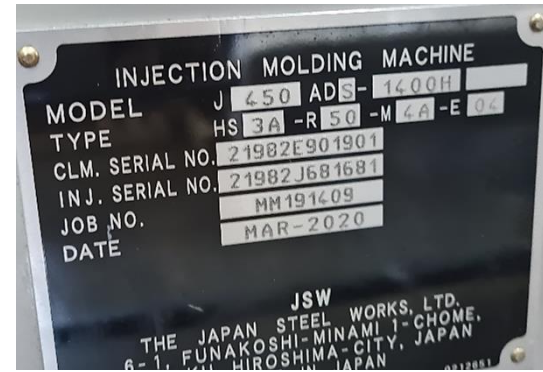
Cycle Count: 50829 cycles

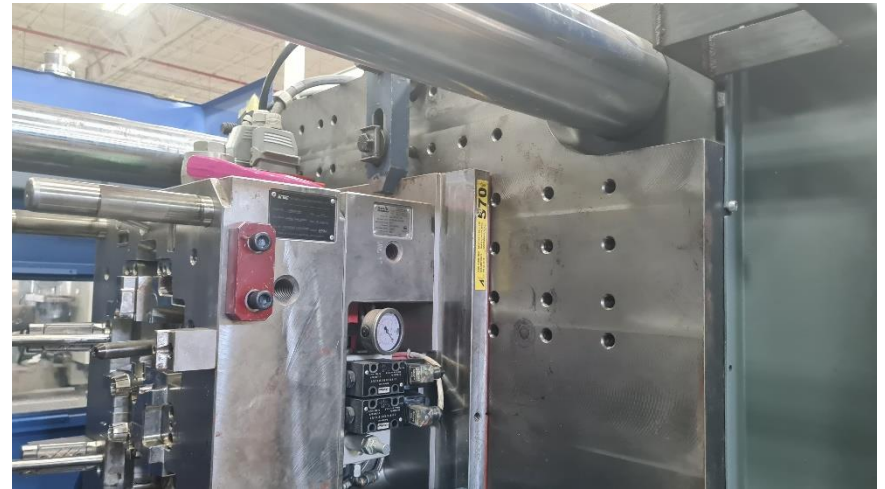
Video:

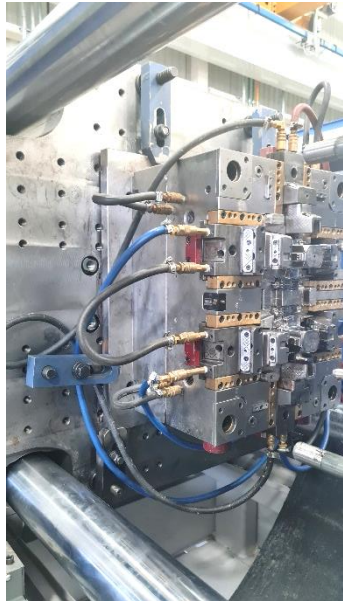
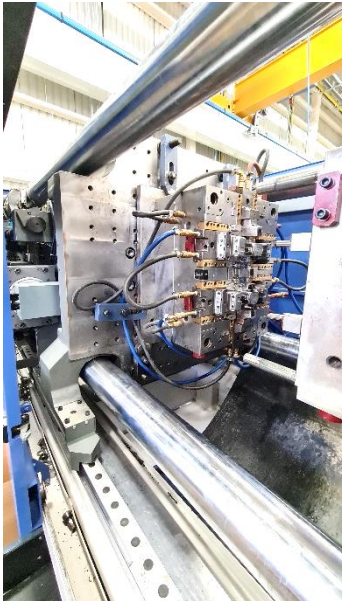
<https://www.dropbox.com/s/vinggqa8dcrvk0k/2022-11-09%2012.39.00.mp4?dl=0>

Location: Tekmart Juarez Custom Molding Plant

Availability: January 2023







TEKMART



molde 570
960/980

Máquina	Val cont	Ciclo	Alim	Gráfi onda	Real	Histor
Ciclo	56.25 s	Hus Po	0.00 mm	PR Vel trans	16.9 mm/s	
Gros M	833.3 mm	INY Pos inic	80.00 mm	REC Par	0.0 %	
Fuer cierre	2800 RN	REC Pos fin	0.00 mm	REC Par máx.	6.7 %	
Pos de cruceta	420.36 mm	PR Pos trans	14.00 mm	Vel rotación	0.0 min ⁻¹	
Pos. PLT	380.0 mm	Pos de cojin	12.67 mm	Prot. M FI	25.0 %	
EX Pos.	0.04 mm	PR Pos. final	12.67 mm			
Tiemp CM	3.73 s	INY Tiem	2.06 s			
Tiemp AM	3.78 s	PR Tiem	5.00 s			
EX Tiem av	0.54 s	REC Tiem	30.00 s			
EX Tiem RET	0.80 s	INY Pres pico	1046 bar			
Tiem enfr	35.19 s	PR Pre trans	644 bar			
Interval	5.61 s	Pres pico CP	0 bar			
Cont ciclo	50829	Pres cilind	0 bar			

Expuls EX Ajuste 2 Modo

Expuls

Límite par. av. 50.0 kN Intvl 0.04 mm Interval 0.00 s

